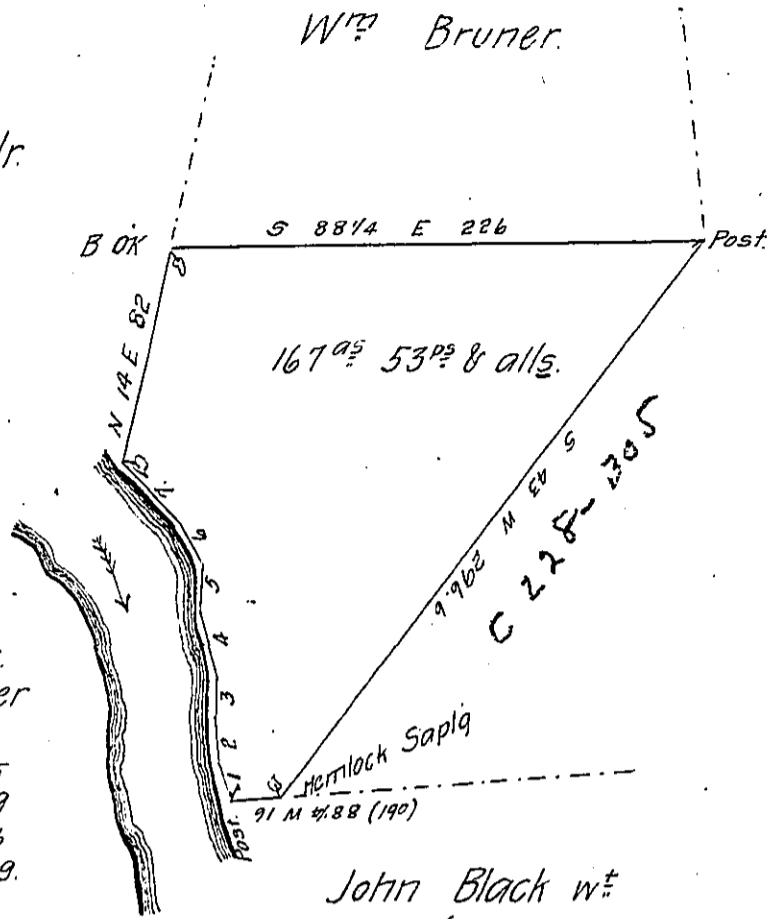


John Wilkins Jr.  
No 1234.

W<sup>th</sup> Bruner.



Valent<sup>n</sup> Ulrick

Courses & distances.  
from Post up the river

- No 1 N 10 W 15
- 2 North 19
- 3 N 5 E 16
- 4 N 5 W 29.

Courses, Continued.

- No 5 N 5 E 18
- 6 N 25 W 18
- 7 N 33 W 36 Beech  
thence up the Wilkins line.

John Black w<sup>th</sup>  
(now  
Bleakley and Dale)

Draft of a tract of land situate in President Township,  
Venango County, East of and adjoining the Allegheny River,  
about a mile & half above the mouth of Horse Creek.

Surveyed 2<sup>d</sup> April 1861 for James Nelles in pursuance  
of a warrant granted to him dated 25<sup>th</sup> day of March 1861.

W<sup>th</sup> Hilands.

Hon. W<sup>th</sup> H. Keim }  
Surveyor General. }

C. S.

IN TESTIMONY that the above is a copy of the original remaining on file in  
the Department of Internal Affairs of Pennsylvania, made  
conformably to an Act of Assembly approved the 16th day of  
February, 1833, I have hereunto set my Hand and caused  
the Seal of said Department to be affixed at Harrisburg,  
this first day of March 1906.

*George D. Brown*  
Secretary of Internal Affairs.